

CASE STUDY

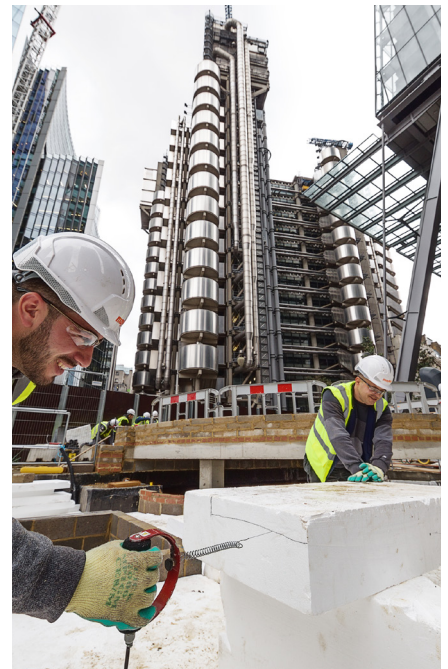


St Helen's Square

London, EC3V

Principal Contractor: Maylim
Landscape Architect: Gillespies
Engineer: WSP
Market Sector: Structural Fill Solutions
Product: Filcor EPS (Expanded Polystyrene)

Situated in the heart of the city, at the junction of Leadenhall Street and St Mary Axe, St Helen's Square will be one of London's largest open spaces once complete. The square was previously terraced below street level, therefore the plan was to elevate it up, bringing it into line with the carriage way which would allow the public realm to extend across the site and under the Leadenhall Building. Cordek were asked to supply Filcor Expanded Polystyrene (EPS) as a structural fill solution beneath the new landscaped area.



Summary

The challenge was to infill the existing area despite the engineering constraints associated with the occupied basement beneath. In total 185m³ of Filcor 45 and 804m³ of Filcor 70 was supplied in a variety of thicknesses, comprising of both sheets and blocks. The principal contractor Maylim were able to cut the Filcor EPS to the bespoke shapes required on site by hiring one of Cordek's unique 110v Hot Wire Cutters.

Please contact us for
more information

01403 799600

info@cordek.com