

Ground Level Vent Box Data Sheet



The range of ground level vent boxes offered by Cordek, are designed to provide a practical and aesthetic method of venting ground gases from beneath a building, to the external atmosphere. The vent boxes are designed to be connected to one of the Cordek passive gas venting system and installed within the external landscaping. The use of vent boxes is recommended where the use of alternative vent options is precluded due to the type of external wall construction i.e. cladding, glazed facades.

Key Features

- Various different vent box dimensions and geometries
- Range of lid types, manufactured from either stainless or galvanised steel
- Vent box lids available with either perforations or slots to suit project requirements and venting design
- Supported by full range of accessories to provide robust connection to Cordek venting system.

Installation

The Cordek range of vent boxes are designed to allow the specifier to select the most appropriate vent type based upon performance, aesthetics and functionality. Vent boxes are usually selected where more traditional vent types such as air bricks cannot be used. The vent box range allows the passage of any ground gas to vent passively to the atmosphere from beneath the building. Usually the vent boxes are positioned at the designed centres, within the external landscape on opposing sides of the building. Connection to a land drain, attenuation system or soakaway prevents the vent box from collecting surface water and the removable lids allow cleaning and maintenance to be carried out when required.

Storage

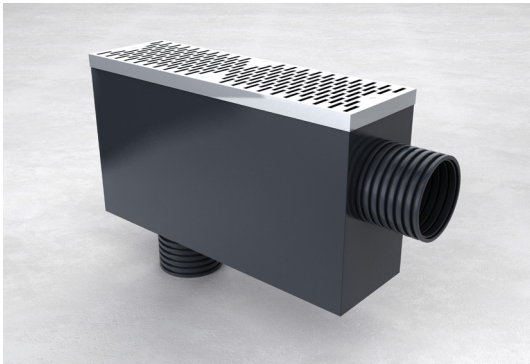
Cordek vent boxes and associated accessories should be kept in a cool, dry environment prior to installation.

For further information on the full range of VOC & Ground Gas Protection, please contact the Cordek technical team on 01403 799600, techsupport@cordek.com or consult our website at www.cordek.com.



Technical Information

Cordek Ground Level Vent Boxes:



Product Reference	Product Description
CGV-017	Vent box only
CGV-018	Stainless steel, slotted lid
CGV-019	Stainless steel, perforated lid
CGV-020	Galvanised steel, slotted lid
CGV-021	Galvanised steel, perforated lid

Dimensions	500mm long x 150mm wide x 275mm deep
Lid options – Materials	Stainless or galvanised steel
Lid options – Open air space	Slotted (8mm slots) – 19,200mm ² Perforated (6mm holes) – 5,994 mm ²
Features	<ul style="list-style-type: none"> • Stainless steel or galvanised steel lid secured using 4no. counter sunk threaded allen bolts • Side connection into vent box prevents surface water from entering the gas inlet • 110mm diameter gas inlet and water outlet connections • Base connection to stormwater collection, land drainage or soakaway system • Removable mesh over drain outlet to prevent blockage by debris

Cordek Rectangular Gulley Vent (with stainless steel lid):



Product Reference	Product Description
CGV-023	Stainless steel, perforated lid
CGV-024	Stainless steel, slotted lid

Dimensions	690mm overall length Lid: 410mm long x 210mm wide
Lid options – Materials	Stainless steel
Lid options – Open air space	Slotted (6mm wide) – 18,100 mm ² Perforated (6mm holes) – 6,840 mm ²
Features	<ul style="list-style-type: none"> • Stainless steel lid secured using 4no. counter sunk threaded allen bolts • 110mm diameter gas inlet and 175mm water outlet connections • Base connection to stormwater collection, land drainage or soakaway system

Cordek Circular Gulley Vent (with stainless steel lid):



Product Reference	CGV-022 Stainless steel, perforated lid
Dimensions	690mm overall length x 175mm diameter
Lid options – Materials	Stainless steel
Lid options – Open air space	Perforated (6mm holes) – 7,000mm ²
Features	<ul style="list-style-type: none"> • Stainless steel lid secured using 4no. counter sunk threaded allen bolts • 110mm diameter gas inlet and 175mm water outlet connections • Base connection to stormwater collection, land drainage or soakaway system

Issued: 03/2016

DISCLAIMER: Information contained within this 'Technical Data Sheet' is for guidance only, and it is intended for experienced construction industry workers. It contains summaries of aspects of the subject matter and does not provide comprehensive statements of construction industry practice. As conditions of usage and installation are beyond our control we do not warrant performance obtained. Please contact us if you have any doubt as to the suitability of application. The information provided within this document is based on data and knowledge correct at the time of printing.

Cordek Ltd

Spring Copse Business Park, Slinfold, West Sussex
RH13 0SZ, United Kingdom

Telephone (+44) 1403 799600 Fax (+44) 1403 791718
E-mail info@cordek.com

www.cordek.com

