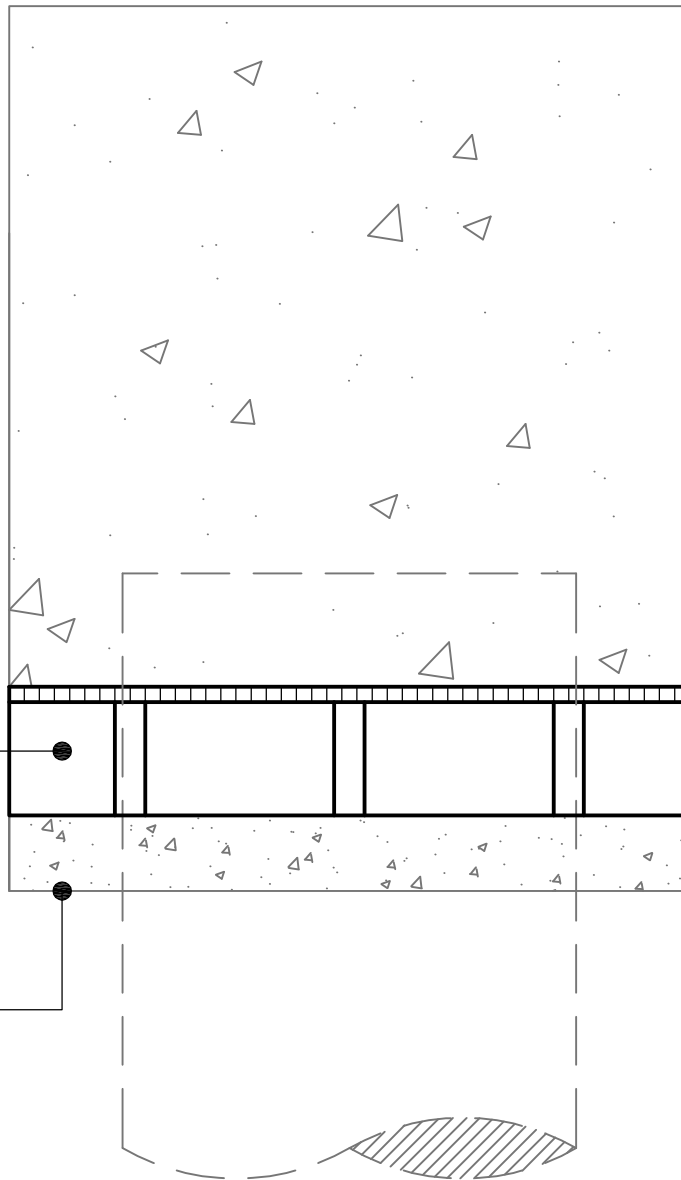


Cellcore 100mm
HG 40/50

Concrete blinding



Cellcore 100mm HG 40/50		
Panel Depth	Max. Clear Void	Beam Depth
100mm	50mm	0-1540mm
Cellcore HX S, HX B & HX Plus options are available upon request		

Standard Detail



Tel : 01403 799600

Email : techsupport@cordek.com

Drg. Title:
Standard Ground Beam Detail :
Cellcore HG - Low Heave Potential

Drawn: SJP

Date: June.2017

Scale: NTS

Rev. - 002

Drg No.ENG/GH/CELL/100 HG 40/50/GBEAM

Products :-

Cellcore 100mm HG 40/50.

Notes :-

- The appropriate specification of Cellcore and Heaveguard panels should be selected based upon the information provided in the relevant Cordek technical guidance.
- Cellcore panels should be installed on a smooth, flat, well compacted surface comprising of a sand / cement or concrete blinding.
- Where necessary, joints between individual Cellcore panels should be sealed using Cordek formwork tape.
- Care should be taken not to surcharge the Cellcore panels with either reinforcement or concrete.