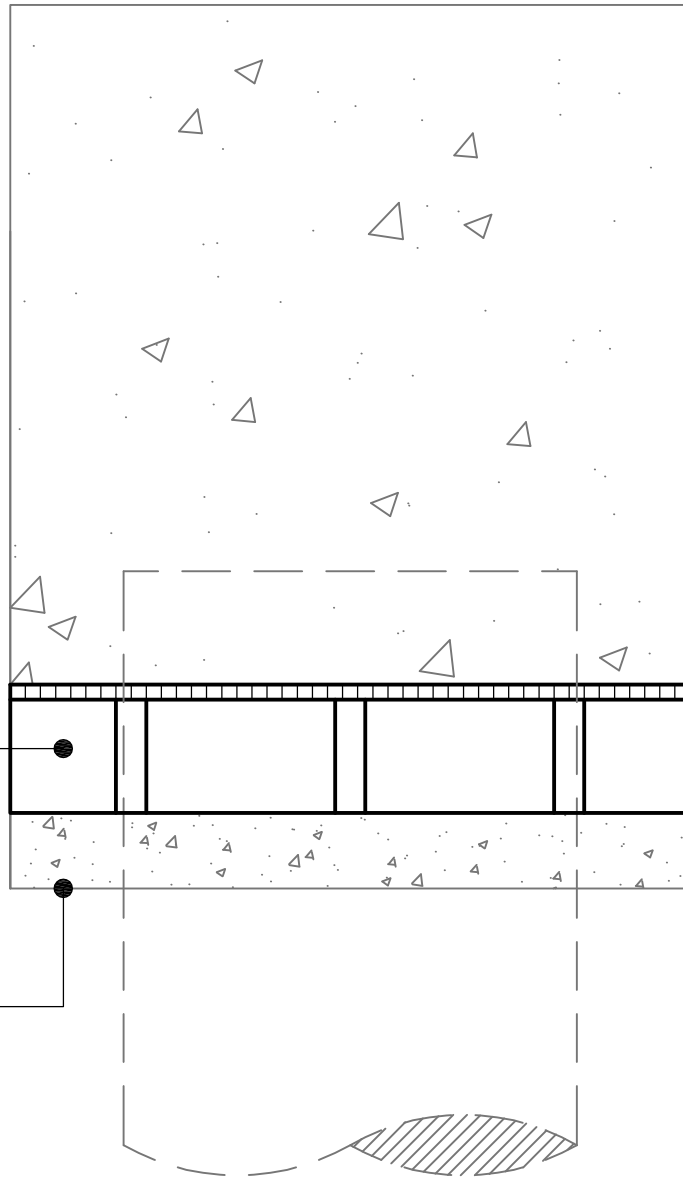


Cellcore 85mm
HX B 24/32

Concrete blinding



Cellcore 85mm HX B 24/32		
Panel Depth	Max. Clear Void	Beam Depth
85mm	50mm	0-900mm
Cellcore HX S & HX Plus options are available upon request		

Standard Detail



Tel : 01403 799600

Email : techsupport@cordek.com

Drg. Title:

Standard Ground Beam Detail :

Cellcore HX B - Low Heave Potential

Drawn: SJP

Date: June.2017

Scale: NTS

Drg No.ENG/GH/CELL/85 HXB 24/32

Rev. - 002

Products :-

Cellcore 85mm HX B 24/32.

Notes :-

- The appropriate specification of Cellcore and Heaveguard panels should be selected based upon the information provided in the relevant Cordek technical guidance.

- Cellcore panels should be installed on a smooth, flat, well compacted surface comprising of a sand / cement or concrete blinding.

- Where necessary, joints between individual Cellcore panels should be sealed using Cordek formwork tape.

- Care should be taken not to surcharge the Cellcore panels with either reinforcement or concrete.