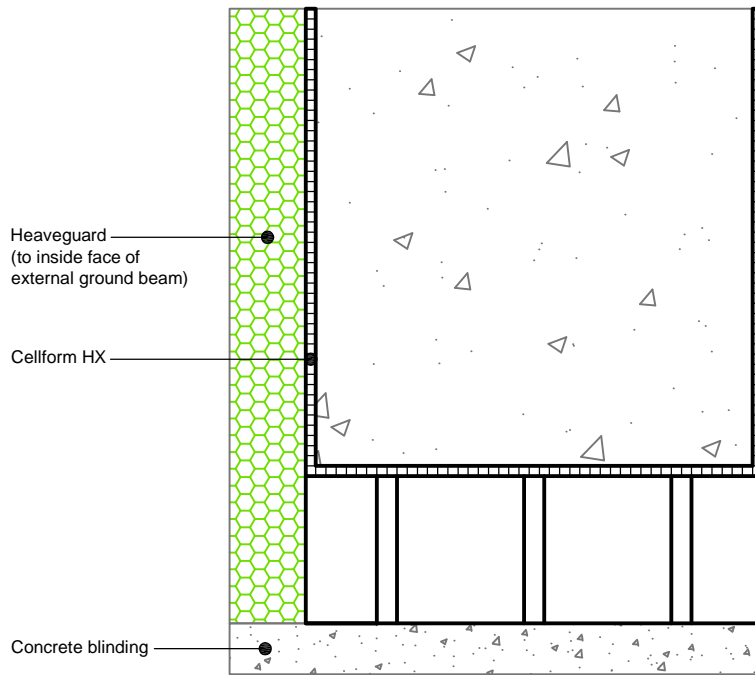


Heaveguard Positioned Inside Cellform HX



Heaveguard Positioned Outside Cellform HX

Standard Detail



Tel : 01403 799600
Email : techsupport@cordek.com

Drg. Title:
Typical Perimeter Ground Beam Detail :
Cellform HX & Heaveguard

Drawn: SJP

Date: Sept.2017 Scale: NTS Rev.

Drg No.ENG/GH/CFORM/001

Products :-

Cellform HX.
Heaveguard.

Notes :-

- The appropriate specification of Cellform HX and Heaveguard panels should be selected based upon the information provided in the relevant Cordek technical guidance.
- Cellform HX panels should be installed on a smooth, flat, well compacted surface comprising of a sand / cement or concrete blinding.
- Where necessary, joints between individual Cellform HX panels should be sealed using Cordek formwork tape.
- Care should be taken not to surcharge the Cellform HX panels with either reinforcement or concrete.
- The width of the Cellform HX panels should take in to account the position of the Heaveguard i.e. either on the inside or outside of the integral formwork.