

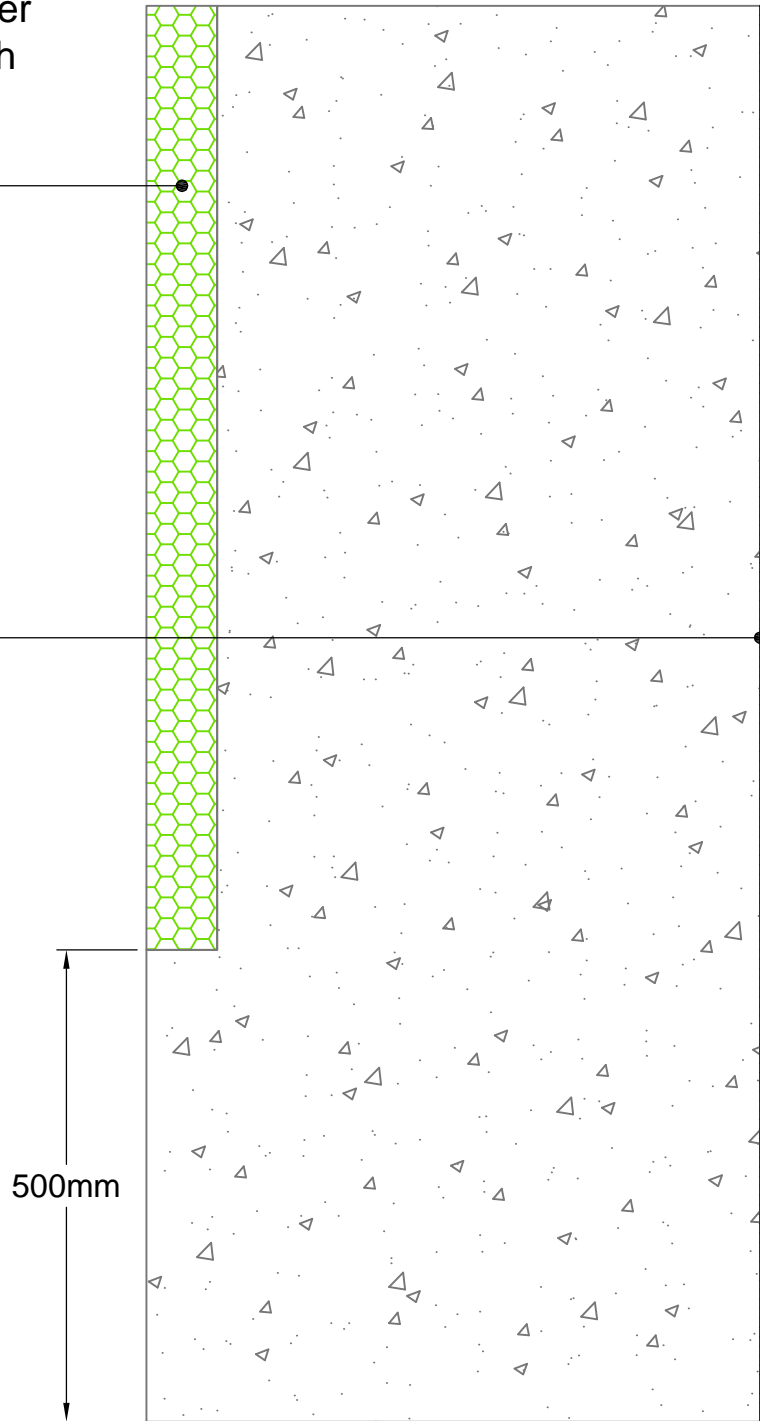
For foundations greater than 1500mm in depth

Heaveguard 75mm required for high shrinkability clay

Heaveguard 50mm required for medium shrinkability clay

Not required for low shrinkability clay

Correx slip membrane to be provided if required



Standard Detail



Tel : 01403 799600
Email : techsupport@cordek.com

Drg. Title:
Standard Deep Trench Fill Detail - Heaveguard

Drawn: SJP

Date: June.2017

Scale: NTS

Drg No. ENG/GH/HVG/001

Rev. - 002

Products :-

Heaveguard.

Notes :-

- The appropriate specification of Heaveguard panels should be selected based upon the information provided in the relevant Cordek technical guidance.