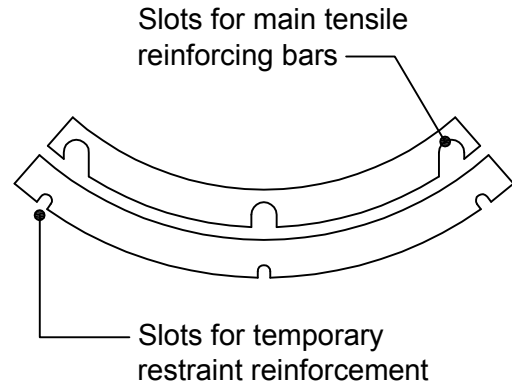
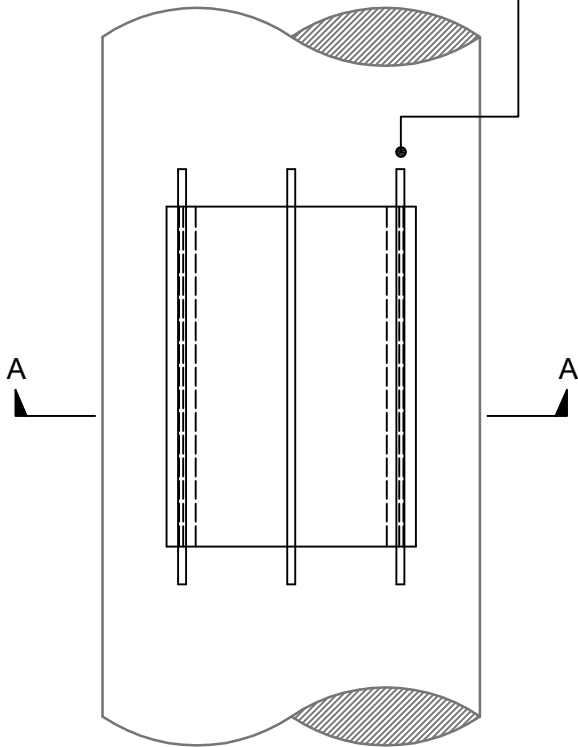


Section A-A



Pilecor box-outs held in place using mild steel temporary restraint bars welded to cage



Filcor EPS grades & performance		
Grades	Compressive strength @ 1% strain	Max. concrete depth (m)
Filcor 100	100kN/m <sup>2</sup>	4.1
Filcor 120	120kN/m <sup>2</sup>	5.0
Filcor 140	140kN/m <sup>2</sup>	5.8
Filcor 160	160kN/m <sup>2</sup>	6.6
Filcor 190	190kN/m <sup>2</sup>	7.9
All Filcor grades of expanded polystyrene are manufactured in accordance with BS EN 14933:2007		
The above materials are available in a flame retardant grade if required		

**Products :-**

Pilecor.

**Notes :-**

- Pilecor units are manufactured to order, with the width, depth and cut-outs for reinforcing bars of each unit tailored to meet the project requirements.
- The grade of Filcor EPS used to manufacture the Pilecor units is dependent on the height of concrete to be cast above them. Please contact the Cordek Technical Team for applications where the concrete depth exceeds 7.9m.
- Mild steel restraining bars may be required to be tack welded to the main tensile rebar.

**Standard Detail**



Tel : 01403 799600

Email : techsupport@cordek.com

Drg. Title:  
Standard Floor Slab to Pile Wall Detail - Pilecor

Drawn: SJP

Date: April.2015

Scale: NTS

Drg No. ENG/PP/PC/001

Rev.